

Outdoor fire checklist

Kiwis love being outdoors, and an outdoor fire is a great way to enjoy outdoor living, especially in the summer months when the evenings are fine and the days are longer- perfect for gatherings with friends and family.

Here are some outdoor fire safety tips every homeowner should know to ensure everyone can enjoy the fire safely.

- ☐ Check www.checkitsalright.nz to find out the current fire season rules and to see if you can light a fire.
- ☐ Never leave the fire unattended.
- ☐ Use dry, appropriately sized firewood for the fire.
- ☐ Have a hose or fire extinguisher nearby in case of an emergency.
- ☐ Clean out ash and debris from your fire - cool and dispose of safely.
- ☐ Maintain a 3m clear area around the fire.
- ☐ Permanent freestanding fireplaces or ovens must be anchored and restrained as outlined in supplier/manufacturer instructions.
- ☐ If you're not placing your fireplace on an inflammable surface like stone
- ☐ If you have a permit for your fire, visit checkitsalright.nz to check the fire season and weather conditions. Always follow the conditions on your permit.



More advice worth listening to.
Keep you, your family and your property safe with our advice on how to reduce the risk of house fires.

GET FIRED UP ABOUT KEEPING YOUR FIREPLACE SAFE.

Every year, as temperatures drop, we see a significant increase in the number of house fires. Winter brings a unique set of fire dangers that you need to be aware of, including your fireplace.

Fires from fireplaces might seem obvious but many that get out of control and cause damage are preventable. Follow this checklist for some simple things you can do to reduce the risk of a fire in your home.

To learn more visit
www.fireandemergency.nz
www.fmg.co.nz

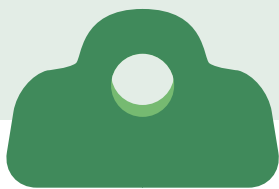


FMG
Advice & Insurance

**FIRES FROM
FIREPLACES**
— make up —

1 in 6

**HOUSE FIRE
CLAIMS**



Inspect your fireplace and chimney

How do you keep your fireplace safe? The best tools you have are your eyes. With regular visual inspections both inside your home and out, you'll make sure your fireplace is in good shape for the colder months.

**The date we use as a reminder
to check our fire and chimney is:**

e.g. ANZAC day, April Fools Day, Daylight savings

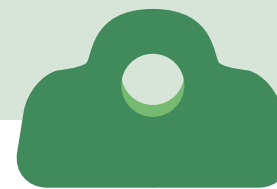
Checking from the outside of your home

- ☐ Examine the chimney to make sure a chimney cap is present and in good repair.
- ☐ Ensure there's no bird nest or debris buildup on the cap.
- ☐ Ensure there are no tree limbs above or near the chimney.
- ☐ Inspect chimney mortar and bricks to make sure they aren't crumbling or missing.
- ☐ Check the chimney is plumb and not leaning to one side or the other.
- ☐ Check that the roof flashing is tight against the chimney.

Checking from the inside of your home

- ☐ Examine the firebox for any cracks, gaps, or signs of wear in the lining.
- ☐ Inspect the fireplace surround & hearth, for signs of damage or deterioration.
- ☐ If you have a brick or stone fireplace, check for cracked bricks or missing mortar.
- ☐ Inspect the glass doors for cracks or latch issues.
- ☐ Look for water stains on the ceiling or walls around the fireplace, leaks may indicate issues with the flashing around the chimney.
- ☐ Check for smoke stains – these can indicate your fireplace isn't function properly.

If you find an issue, get a professional to make repairs as soon as possible.



Fireplace safety checklist

- ☐ Clean the chimney at least once a year.
- ☐ Check your fireplace and chimney and carry out necessary maintenance.
- ☐ Ensure everyone in your home knows and follows the “1 metre from the heater” rule.
- ☐ Clear flammable items from within 1 metre of fireplace.
- ☐ Check your fire guard is made from non-flammable materials, fits properly, and is secured.
- ☐ Have a set of fire tools.
- ☐ Keep matches and lighters out of children's reach.
- ☐ Store your firewood at least 10 metres from the house.
- ☐ Calculate the amount of dry firewood you will need to get through the winter and make sure you have enough prior to winter or can source dry wood as you need it.
- ☐ Use a metal bucket for emptying the ashes.
- ☐ Ashes should be submerged in water and cooled for at least three days before disposal. Designate a specific place for cooled ash disposal.

